

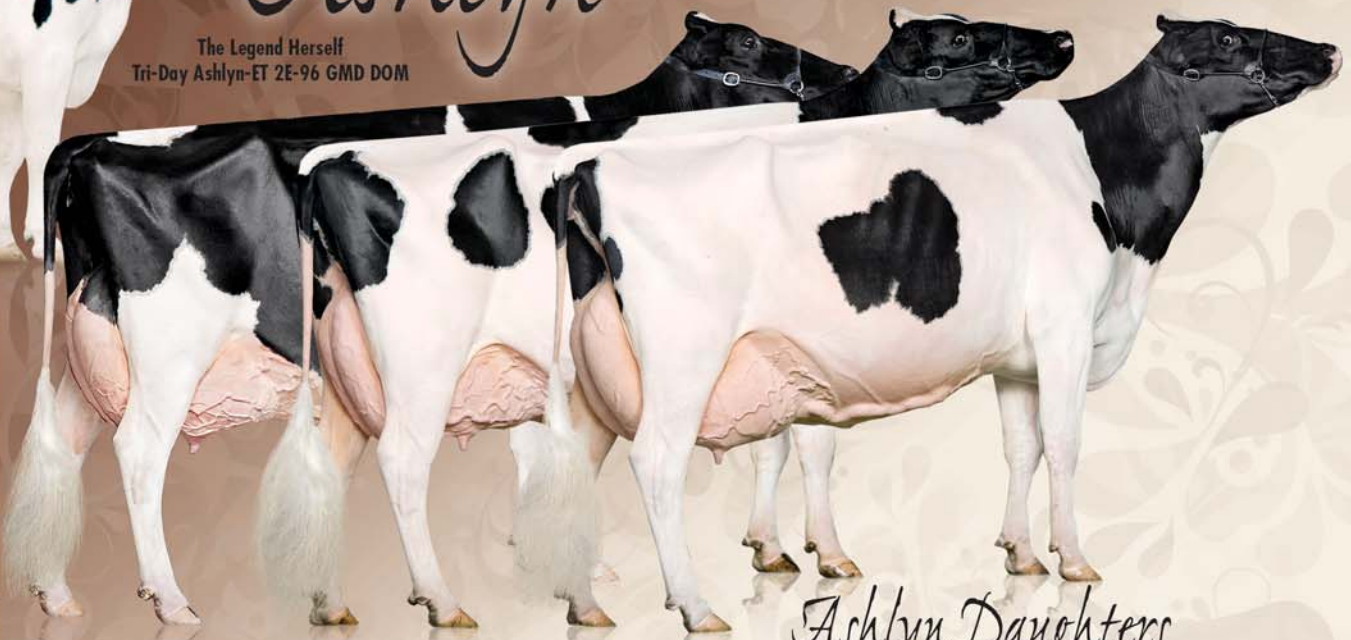
THE EVOLUTION OF A LEGENDARY BLOODLINE



Ashlyn

The Legend Herself
Tri-Day Ashlyn-ET 2E-96 GMD DOM

A legendary bloodline doesn't just happen. It is developed over time, attracts attention and instills confidence through offspring and longevity. Ashlyn is a living legend that made a name for herself in the show ring a decade ago. But she didn't stop there. As you can see below, Ashlyn has daughters and now granddaughters that are carrying on the family tradition. We enjoy working to develop this legendary bloodline each and every day.



Ashlyn Daughters

Angel 2E-96 GMD
Supreme Champion PA All-American 2010

Aphrodite 2E-95
Member All-American Produce of Dam

Ambrosia 2E-95 GMD
Twice Reserve All-American



Arethusa Durham Angela EX-91, *Angel* dtr
Arethusa Affection EX-92, *Angel* dtr
All-American Milking Yearling

Ernest-Anthony Astonish EX-91, *Aphrodite* dtr
Ernest-Anthony Aquarius EX-91, *Aphrodite* dtr

Ernest-Anthony Adeline EX-91, *Ambrosia* dtr
Ernest-Anthony Amora VG-88@2YRS, *Ambrosia* dtr

Ashlyn Granddaughters

Arethusa Farm

Ernie Kueffner & Terri Packard, Farm Managers
860-567-8270 | Fax: 860-567-2426 | PO Box 1143, Litchfield, CT 06759
www.arethusafarm.com | dairy1@arethusafarm.com



ERNIE KUEFFNER
Cell: 301-639-2924
www.kueffnerkows.com
Email: kueffnerkows1@aol.com